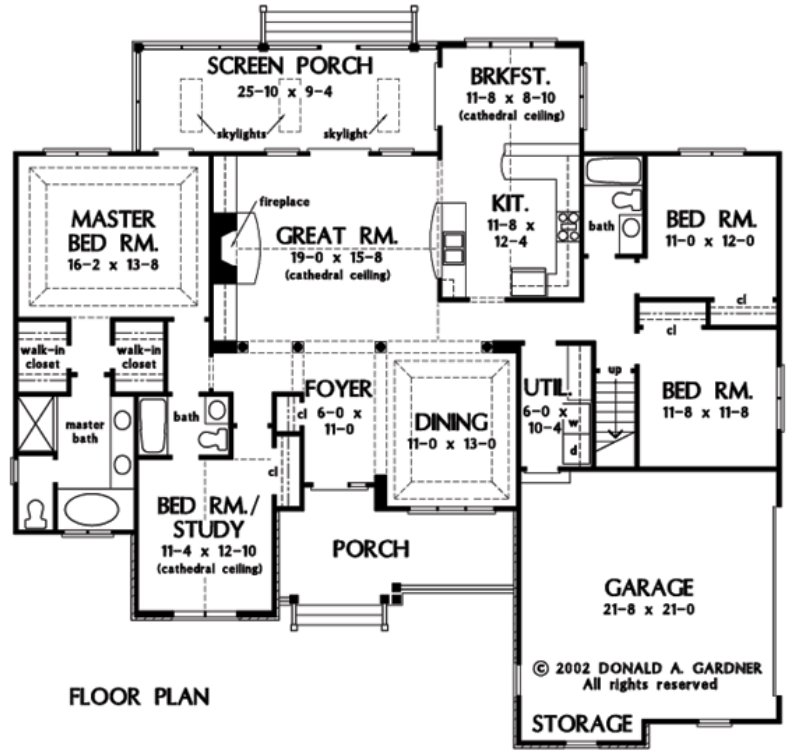


The Satchwell

2,550 sqft, 4 to 5 bedrooms, 3 baths

The Satchwell is a very popular plan by designer *Donald Gardner*. Our version adds two feet to the middle of the house which gives room for a drop zone and pantry in the laundry area and adds width to the kitchen and breakfast area (not shown). Creating a bedroom from the bonus room makes a nice three bedroom wing on the garage side and still leaves a separate study/guest bedroom up front with separate bath. Shown with many popular options such as screened porch, fireplace, bookcases, vaulted ceilings, etc., this plan can be customized to fit a range of building budgets.



"The builder who always welcomes your call."
(757) 537-7167



PLAN NO. 967

